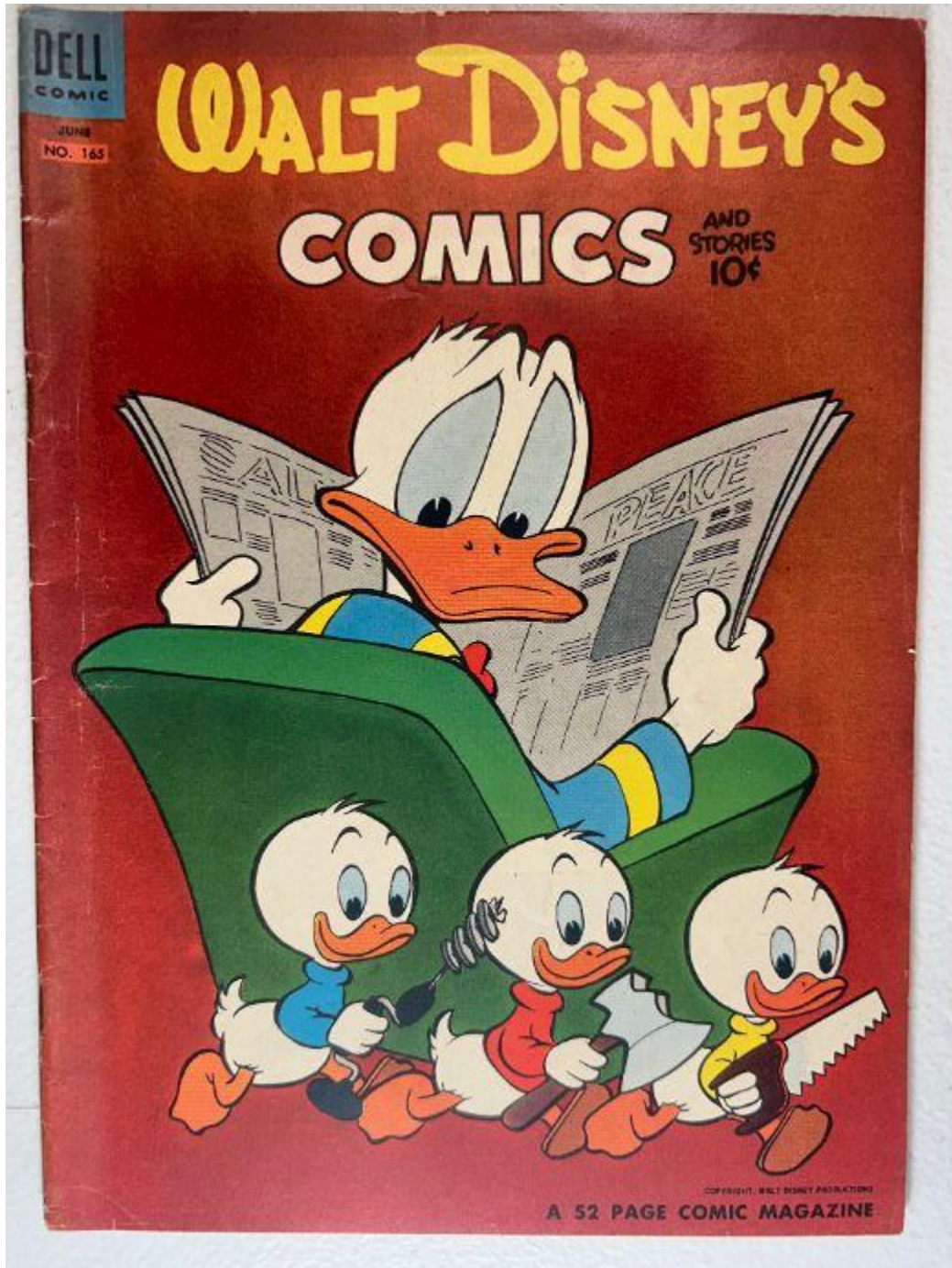


■ **Walt Disney's Comics and Stories – Vol. 14 No. 9
(June 1952)**

Evaluation Date: April 3, 2026



SUMMARY OF OBSERVATIONS

This comic retains the front cover, back cover, centerfold, and all photographed interior pages. Overall presentation is strong and visually appealing. The front cover shows rich color saturation and retained surface gloss. Interior pages are complete and readable with consistent age-related toning. The spine remains continuous and intact, with light cracking and no visible splitting.

Condition issues are present but limited. The front cover shows **localized edge wear along the lower edge**, characterized by shallow abrasion and thinning rather than detached loss. Both staples are present and embedded, showing **light to moderate surface oxidation** without clear rust migration into surrounding paper. The back cover and interior pages show **uniform discoloration consistent with natural paper oxidation**, not localized staining. The brittleness test image shows a single page gently flexed, forming a smooth arc with no visible fiber fracture.

FRONT COVER — OBSERVATIONS

Walt Disney's Comics and Stories – Vol. 14 No. 9 (June 1952)

Photo Condition & Quality:

Image is sharp and evenly lit, showing the full cover with edges, corners, and spine visible. Resolution is sufficient to assess gloss, color saturation, and edge condition.

Observations:

- Strong, even color saturation across the red background and character artwork.
- Surface gloss is clearly visible across most of the cover field.
- Along the **lower edge**, there is **localized edge abrasion with shallow thinning**, exposing lighter paper beneath the ink layer but without a detached void or missing section.
- The worn area measures approximately **12–18 mm in length** and remains flush with surrounding cover stock.
- Spine edge shows **fine vertical cracks**, approximately **2–4 mm** in length.
- Corners show light rounding, approximately **3–5 mm** inward.
- No writing observed.

Overall Impression:

The front cover remains visually strong, with **minor edge wear and light spine cracking**.

BACK COVER — OBSERVATIONS

Walt Disney's Comics and Stories – Vol. 14 No. 9 (June 1952)

Photo Condition & Quality:

Image is clear and evenly lit, fully framed with edges and corners visible.

COLLECT MINIATURE SOLID STEEL
1954 LICENSE PLATES
FROM ALL 48 STATES!

★ **Solid Steel!**

★ **ACTUAL SIZE**

★ **Finished in Colors of Official State Plates!** ★ **Complete with Holes for Easy Attachment!**

★ **Raised Numbers Like Official Plates!**

MIDWEST STATES SET	EASTERN STATES SET	SOUTHERN STATES SET	WESTERN STATES SET
1. North Dakota	1. Maine	1. Virginia	1. Washington
2. South Dakota	2. New Hampshire	2. Louisiana	2. Oregon
3. Nebraska	3. Vermont	3. Mississippi	3. California
4. Kansas	4. Massachusetts	4. Alabama	4. Montana
5. Minnesota	5. Connecticut	5. Georgia	5. Idaho
6. Iowa	6. Rhode Island	6. Florida	6. Nevada
7. Missouri	7. New York	7. South Carolina	7. Arizona
8. Wisconsin	8. Pennsylvania	8. North Carolina	8. Utah
9. Illinois	9. New Jersey	9. Tennessee	9. New Mexico
10. Michigan	10. Delaware	10. Arkansas	10. Colorado
11. Indiana	11. Maryland	11. Oklahoma	11. Wyoming
12. Ohio	12. West Virginia	12. Kentucky	12. Texas

WHEATIES
Breakfast of Champions

Buy 'em by the set!
 (12 DIFFERENT PLATES)
Only 25¢ and one Wheaties box top per set!

SPECIAL BONUS OFFER . . . District of Columbia plate included if you order all 4 sets at once!
 Only \$1.00 and 4 Wheaties box tops!

HURRY! WHILE SUPPLIES LAST!
 Mail To GENERAL MILLS, Box 1800, Minneapolis, Minnesota

Check set or sets desired. Enclose 25c (no stamps please) and Wheaties box top for each set checked, except Bonus Set for which enclose \$1.00 and FOUR (4) Wheaties box tops.

MIDWEST EASTERN SOUTHERN WESTERN BONUS SET

NAME (print) _____
 ADDRESS (print) _____
 CITY (print) _____ STATE _____

Observations:

- The back cover exhibits **overall tan toning** that is uniform across the surface.
- No isolated dark patches, tide lines, or boundary-defined stains are visible.
- The discoloration appears gradual and even, consistent with **natural paper oxidation** rather than moisture staining.
- Paper surface appears flat with no cockling or rippling.
- Light edge wear along the bottom and spine edges, approximately **5–10 mm intermittently**.
- No writing observed.

Overall Impression:

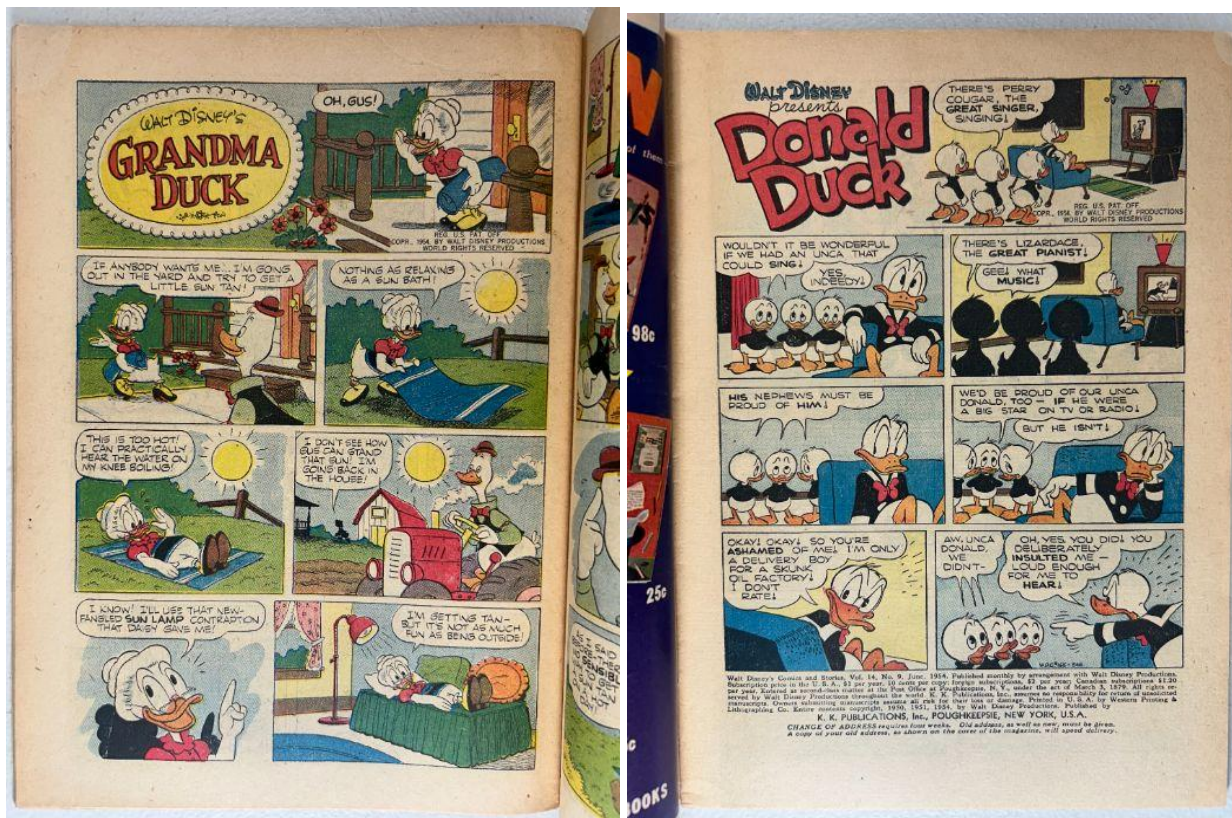
Back cover discoloration is **consistent with normal age-related oxidation**.

INTERIOR PAGES — OBSERVATIONS

Walt Disney's Comics and Stories – Vol. 14 No. 9 (June 1952)

Photo Condition & Quality:

Images are sharp and evenly lit, showing full interior pages with margins visible.





Observations:

- Interior pages exhibit **tan to light-tan paper coloration**.
- Page color is consistent across the photographed pages, with slightly deeper toning toward outer margins.
- The transitions in tone are **gradual**, not abrupt, indicating **normal oxidation** rather than staining.
- Artwork remains clear with strong color and crisp linework.
- No interior tears, chips, or paper loss observed.
- Minor corner bends visible on some pages, approximately **2–4 mm** inward.
- No interior writing observed.

Overall Impression:

Interior pages are **clean, complete, and evenly toned**, consistent with age.

CENTERFOLD — OBSERVATIONS

Walt Disney's Comics and Stories – Vol. 14 No. 9 (June 1952)

Photo Condition & Quality:

Image is in focus and evenly lit, clearly showing both pages and the central gutter.



Observations:

- Both staple positions visible.
- Surrounding paper shows light compression at the fold only.
- No tearing, separation, or paper loss visible.
- Centerfold remains fully attached.

Overall Impression:

The centerfold is **securely attached and structurally sound**.

SPINE — OBSERVATIONS

Walt Disney's Comics and Stories – Vol. 14 No. 9 (June 1952)

Photo Condition & Quality:

Image is sharp and well lit, showing the full spine length.

**Observations:**

- Spine remains continuous and intact.
- Fine vertical cracking present, approximately **2–4 mm** per crack.
- No spine splits, separation, or exposed interior page layers observed.

Overall Impression:

The spine is **structurally intact with light cracking only**.

UPPER STAPLE — OBSERVATIONS

Walt Disney's Comics and Stories – Vol. 14 No. 9 (June 1952)

Photo Condition & Quality:

Macro image is sharp and evenly lit.



Observations:

- Metal staple present and embedded.
- **Light to moderate surface oxidation** visible as darkened metal coloration.
- No visible rust migration into surrounding paper.
- Surrounding paper remains intact.

Overall Impression:

Upper staple shows **surface-level oxidation only**.

LOWER STAPLE — OBSERVATIONS

Walt Disney's Comics and Stories – Vol. 14 No.9 (June 1952)

Photo Condition & Quality:

Macro image is clear and properly framed.



Observations:

- Metal staple present and embedded.
- Oxidation comparable to the upper staple.
- Surrounding paper remains intact with no visible deterioration.

Overall Impression:

Lower staple shows **surface-level oxidation only**.

BRITTLENESS TEST — OBSERVATIONS

Walt Disney's Comics and Stories – Vol. 14 No.9 (June 1952)

Photo Condition & Quality:

Image shows a single interior page lifted above flat underlying pages.



Observations (confined to the lifted page):

- Page bends in a **smooth, shallow arc**.
- No visible fiber fracture, splitting, or flaking along the bend line.
- Paper surface remains continuous at the point of flex.

Overall Impression:

The tested page demonstrates **retained flexibility** and does **not exhibit brittle behavior**.